

Explore Illustrator in 10 Steps

① OPEN A NEW DOCUMENT

FILE → NEW

NAME and set **SIZE** of your document.

OK



You can adjust size of line with **STROKE WEIGHT**.

COLOR PICKER



Move this bubble to set color.

② CREATE A SHAPE

In the tool palette find the



RECTANGLE TOOL

LOTS of shape options to explore by expanding corner!



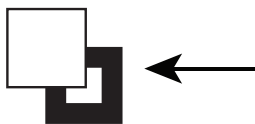
PRESS



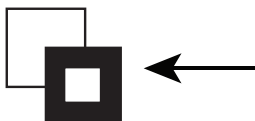
and you can make regular shapes



③ CHANGE COLOR AND OUTLINE OF SHAPE



Double click the **FILL** box to set color or **NO FILL** for the area inside a shape.



Double click the **STROKE** box to set color or **NO STROKE** for the boundary line defining a shape.

④ SELECT AND DELETE



SELECTION (select whole shape)



DIRECT SELECTION (select part of shape or even one point)



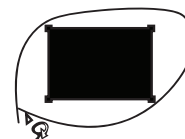
LASSO (draw around things to select)



Select whole by dragging box.



Select a point.



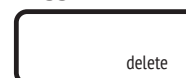
Select free-form shape with lasso.

PRESS



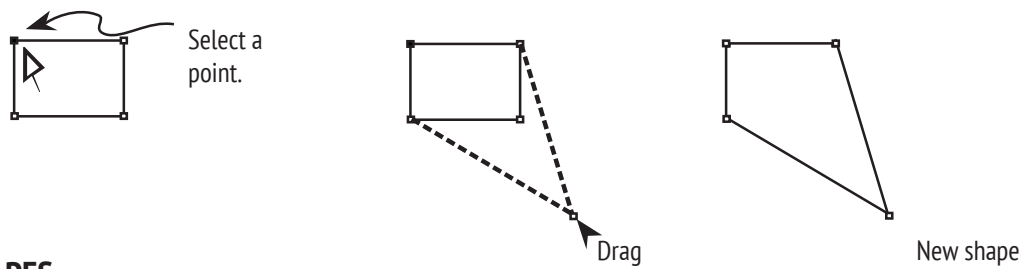
to multiselect

PRESS

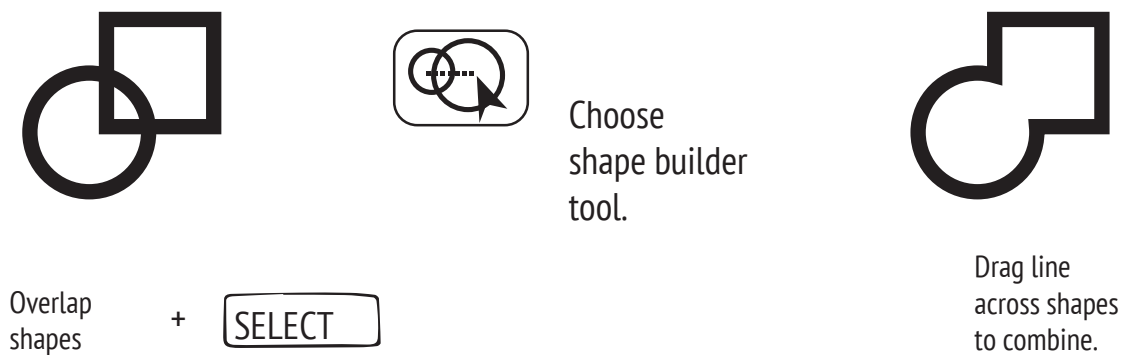


to REMOVE

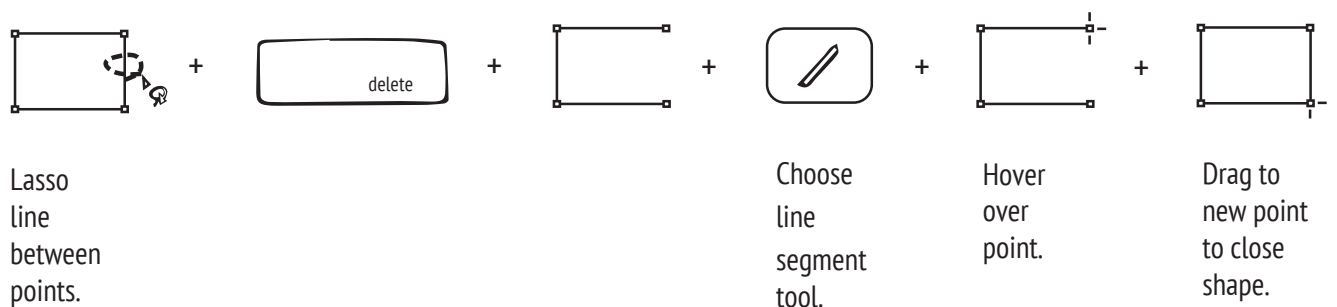
⑤ CHANGE SHAPE OF SHAPE



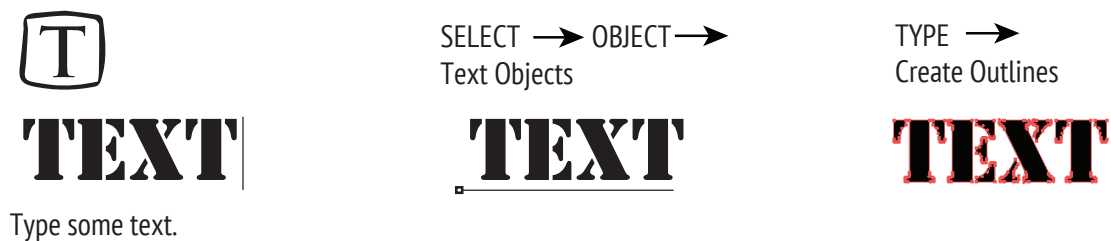
⑥ COMBINE SHAPES



⑦ DELETE A PATH AND RECLOSE A SHAPE



⑧ TURN TEXT INTO OUTLINES



9 DRAW WITH THE PEN TOOL



TRY DRAWING A SQUARE

This means you are starting a shape.



This means you are closing a shape.



TRY DELETING A POINT FROM YOUR SQUARE

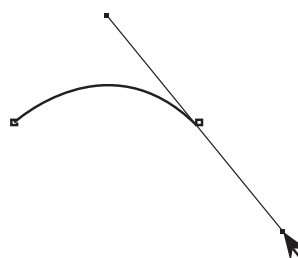


TRY MAKING CURVES

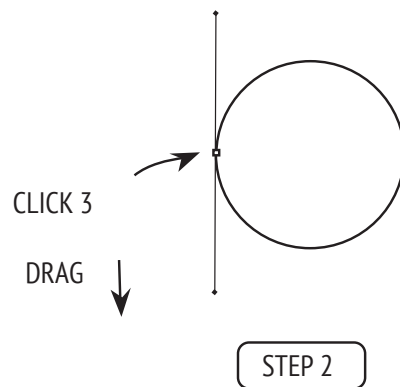
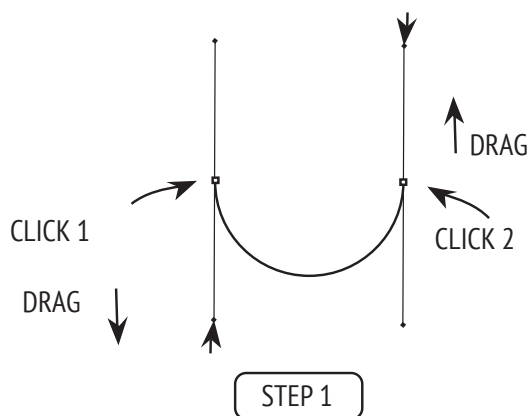
CLICK one.



CLICK two and DRAG.



TRY MAKING A CIRCLE



10 ROTATE AND REFLECT

SELECT SHAPE



Double **CLICK** on **ROTATE** tool to key in an angle for rotation.



SELECT SHAPE



Double **CLICK** on **REFLECT** tool in a horizontal or vertical orientation.

